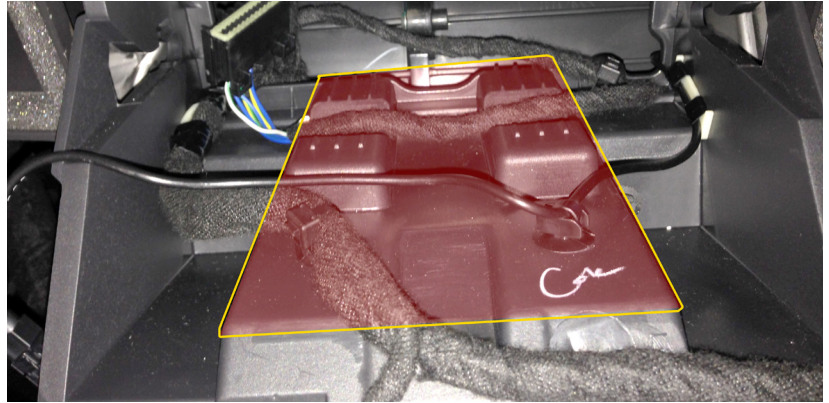


Note: Please be aware that the OEM stereo cannot be reinstalled after these modifications have been made

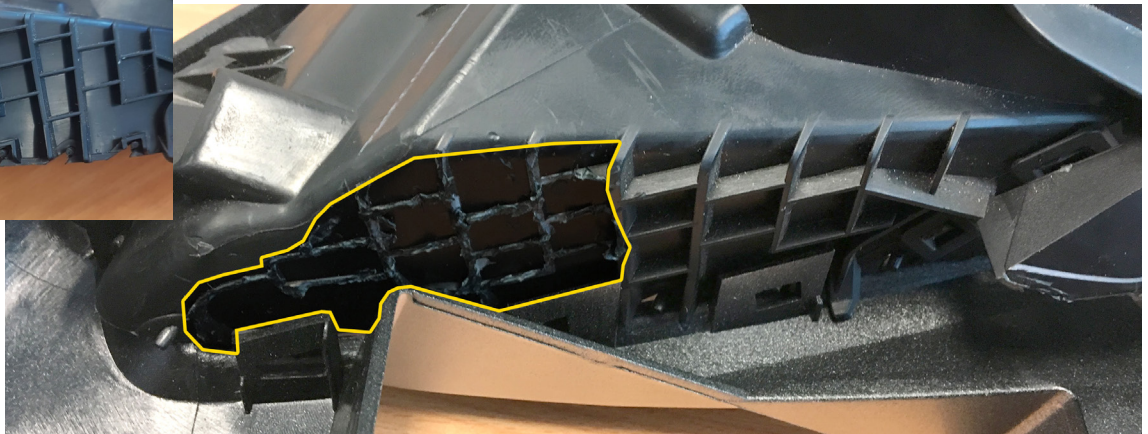
MODIFICATION 1

In order to install a double DIN stereo in the vehicle, adequate space must be made by cutting the sub-dash.

Remove the shaded area of the sub-dash using appropriate tools.



Pre-Mod



MODIFICATION 2

Both right and left-hand vents must be modified before they are reinstalled into the new fascia panel.

Remove the raised plastic area at the location highlighted in Fig. 2, followed by the screw clip circled in Fig. 3.

Note: Ensure that both vents have been modified in this way before reassembly



Pre-Mod

