

CHVW3C

Steering Wheel Control Interface

for select Volkswagen vehicles



Vehicle Application

VW Passat (B6, 3C, B7, 3C36)	2005 - 2015	VW Amarok (2H)	2010>
VW Golf (Mk5/Mk6)	2005 - 2015	VW Suran	2009>
VW Touran	2003 - 2015	VW Vento	2005 - 2011
VW Transporter	2003 - 2015	VW Sagitar	2005 - 2011
VW Polo (9N, 9N3, 6R)	2005 - 2014	VW Magotan	2005 - 2011
VW Jetta	2005 - 2015	VW Fusca	2005 - 2011
VW EOS (1F)	2006 - 2015	VW Touareg	2010>
VW Tiguan (5N)	2007 - 2015	VW UP!	2011 - 2016
VW Scirocco	2008 - 2015		

Key Features

- Retains Steering Wheel Controls
- Retains Factory Phone Buttons
- Provides Speed Pulse, Park Brake, Reverse Gear Outputs

Designed and
Engineered
in the UK. 

ABOUT THIS PRODUCT

CHVW3C

CAN-BusSteering Wheel Control Interface for Volkswagen vehicleswith RCD200/300/310/500/510originalstereoand Quadlock connector

WIRING COLOUR CODES

Purple	Right Rear Speaker +	Yellow	Permanent 12V
Purple/Black	Right Rear Speaker -	Black	Ground
Green	Left Rear Speaker +	Red	Ignition 12V
Green/Black	Left Rear Speaker -	Orange	Illumination
Grey	Right Front Speaker +	Pink	Speed Pulse
Grey/Black	Right Front Speaker -	Green	Park Brake
White	Left Front Speaker +	Purple/White	Reverse Gear
White/Black	Left Front Speaker -		

PRIOR TO INSTALLATION

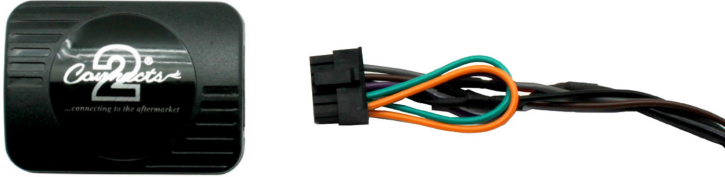
*Read the manual prior to installation. Technical knowledge is necessary for installation. The place of installation must be free of moisture and away from heat sources. Please ensure that the correct tools are used during the installation to avoid damage to the vehicle or product. **Connects2 can not be held responsible for the installation of this product.***

TECHNICAL SUPPORT

If you need assistance setting up or using your Aerpro product now or in the future, call Aerpro Support Australia
TEL: 03 – 8587 8898 FAX: 03 – 8587 8866 Mon-Fri 9am – 5pm AEST. If you would like to download a digital copy of this manual, or other Aerpro manuals/software, please visit the <http://aerpro.com> website.

FITTING GUIDE

1. Remove and disconnect the original head unit.
2. Connect the 12 way molex connector of the head unit patch lead (supplied separately) to the interface.



3. Connect the opposite end of head unit patch lead to the head unit steering wheel control input on the back of the aftermarket head unit.

NB: This may be a 3.5mm jack plug or a wire input depending upon the head unit brand being fitted. Please see the head unit installation manual for further information on where to connect.

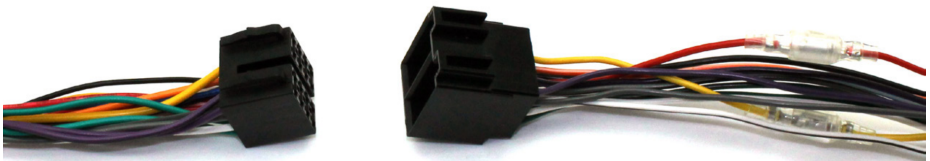
Important: This step must be completed before connecting power to the interface. Failure to do so may result in no steering wheel control function.



4. Connect the 14 way molex connector to the interface



5. Connect the male power/speaker ISO harness to the female power/speaker ISO harness from the aftermarket head unit. For aftermarket head units without an ISO connector, please refer to "Wiring Colour Codes" on Pg. 2.



FITTING GUIDE

6. Connect the female vehicle specific connectorson the harness to the male vehicle connector from the vehicle. Testhead unit for correct operation.

STEERINGWHEELCONTROL FUNCTIONALITY

Config 1.

Original Button	Function
Volume +	Volume +
Volume -	Volume -
Right Arrow	Track +
Left Arrow	Track -
Phone Button	Pick Up (Short Press)
Phone Button	Hang Up (Long Press)
Mute	Mute



Config 2.

Original Button	Function
Volume +	Volume +
Volume -	Volume -
Up Arrow	Track +
Down Arrow	Track -
OK	Source
Star	Mute
Menu	Menu

