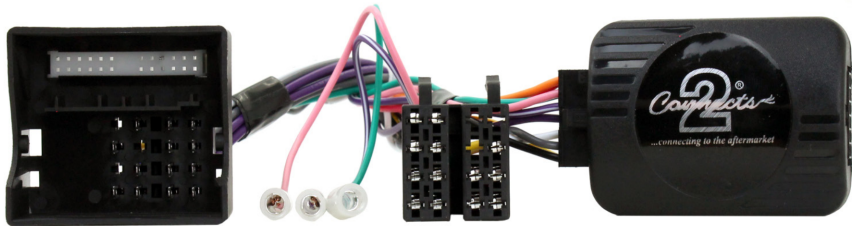


## CHGM5C

### Vauxhall/Opel Steering Wheel Control Interface



#### Vehicle Application

Vauxhall Antara 2006 - 2010  
 Vauxhall Astra (H) 2004 - 2010  
 Vauxhall Corsa (C/D) 2004 - 2009  
 Vauxhall Meriva (A, X01) 2005 - 2010  
 Vauxhall Signum 2005 - 2008  
 Vauxhall Tigra 2004 - 2009  
 Vauxhall Vectra (C, Z02) 2004 - 2008  
 Vauxhall Zafira (B) 2005 - 2014

#### Key Features

- Retains Steering Wheel Controls
- Retains System Settings Menu via SWC
- Provides Speed Pulse, Park Brake, Reverse Gear, Telephone Mute Outputs

Designed and  
 Engineered  
 in the UK. 

## ABOUT THIS PRODUCT

---

### CHGM5C

CAN-Bus Steering Wheel Control Interface for Vauxhall/Opel vehicles with CD30/CDC40/CD50/CD70 original stereo and Quadlock connector.

### WIRING COLOUR CODES

---

Purple	Right Rear Speaker +	Yellow	Permanent 12V
Purple/Black	Right Rear Speaker -	Black	Ground
Green	Left Rear Speaker +	Red	Ignition 12V
Green/Black	Left Rear Speaker -	Orange	Illumination
Grey	Right Front Speaker +	Pink	Speed Pulse
Grey/Black	Right Front Speaker -	Green	Park Brake
White	Left Front Speaker +	Purple/White	Reverse Gear
White/Black	Left Front Speaker -	Yellow/Black	Telephone Mute

### PRIOR TO INSTALLATION

---

*Read the manual prior to installation. Technical knowledge is necessary for installation. The place of installation must be free of moisture and away from heat sources. Please ensure that the correct tools are used during the installation to avoid damage to the vehicle or product. **Aerpro can not be held responsible for the installation of this product.***

### TECHNICAL SUPPORT

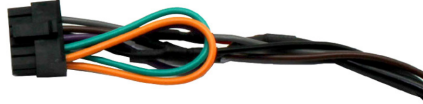
---

If you need assistance setting up or using your Aerpro product now or in the future, call Aerpro Support Australia TEL: 03 – 8587 8898 FAX: 03 – 8587 8866 Mon-Fri 9am – 5pm AEST. If you would like to download a digital copy of this manual, or other Aerpro manuals/software, please visit the <http://aerpro.com> website.

## FITTING GUIDE

---

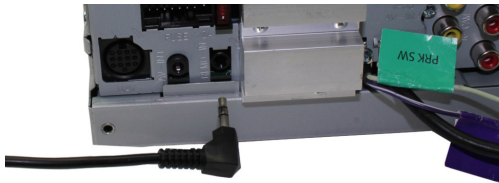
1. Remove and disconnect the original head unit.
2. Connect the 12 way molex connector of the head unit patch lead (supplied separately) to the interface.



3. Connect the opposite end of head unit patch lead to the head unit steering wheel control input on the back of the aftermarket head unit.

*NB: This may be a 3.5mm jack plug or a wire input depending upon the head unit brand being fitted. Please see the head unit installation manual for further information on where to connect.*

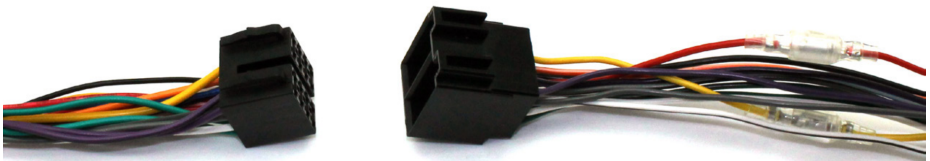
**Important: This step must be completed before connecting power to the interface. Failure to do so may result in no steering wheel control function.**



4. Connect the 14 way molex connector to the interface



5. Connect the male power/speaker ISO harness to the female power/speaker ISO harness from the aftermarket head unit. For aftermarket head units without an ISO connector, please refer to "Wiring Colour Codes" on Pg. 2.



## FITTING GUIDE

---

6. Connect the female vehicle specific connector on the harness to the male vehicle connector from the vehicle. Testhead unit for correct operation.

## STEERINGWHEELCONTROL FUNCTIONALITY

---



## ACCESSING SYSTEM SETTINGS

---

