

CHF017C

Steering Wheel Control Interface *for select Ford vehicles*



Plug and Play



USB Updateable



Works with
CAN-Bus



Park Brake



Reverse Gear



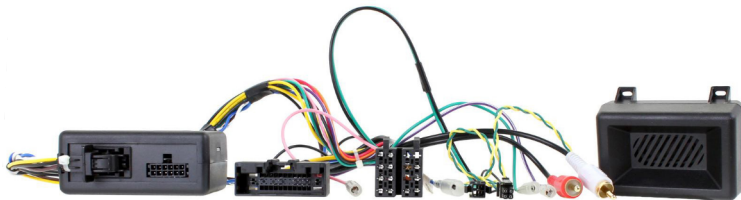
Ignition



Vehicle Settings
Retention



Speed Pulse



INSTRUCTION MANUAL

CHFO17C

Ford steering wheel control interface for Ford vehicles with CAN-Bus.

Product Contents

- Interface
- Harness
- Instruction

Application

Focus 2015>

Prior to installation

Read the manual prior to installation. Technical knowledge is necessary for installation. The place of installation must be free of moisture and away from heat sources. Please ensure you use the correct tools to avoid damage to the vehicle or product.

Aerpro can not be held responsible for the installation of this product.

Technical Support

If you need assistance setting up or using your Aerpro product now or in the future, call Aerpro Support Australia
TEL: 03 – 8587 8898 FAX: 03 – 8587 8866 Mon-Fri 9am – 5pm AEST. If you would like to download a digital copy of this
manual, or other Aerpro manuals/software, please visit the <http://aerpro.com> website.

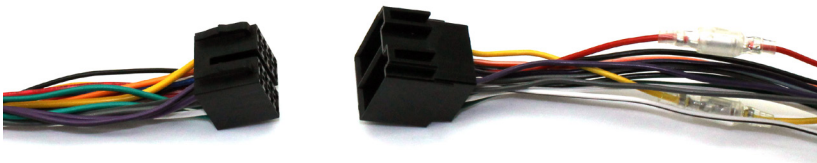
FITTING GUIDE

1. Remove and disconnect the original head unit.
2. Connect the 12 way molex connector of the head unit patch lead (supplied separately) to the interface.
3. Connect the opposite end of head unit patch lead to the head unit steering wheel control input on the back of the aftermarket head unit. This may be a 3.5mm jack plug or a wire input depending upon the head unit brand being fitted. Please see the head unit installation manual for further information on where to connect.

Important Note: This step must be completed before connecting power to the interface. Failure to so do may result in no steering wheel control function.



4. Connect the 14 way molex connector, the car display connector (from the vehicle) and the chime retention box to the interface.
5. Connect the car display connector (from the interface) to the vehicle and the Aux In to the back of the head unit
6. Connect the male power/speaker ISO harness to the female power/speaker ISO harness from the aftermarket head unit.
7. Connect the USB lead to the OEM USB connector and the back of the head unit



FITTING GUIDE

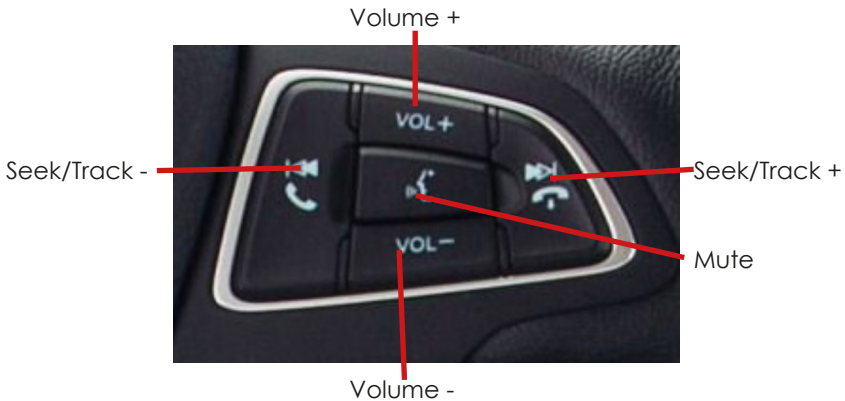
For aftermarket head units which do not have an ISO connector the interface uses the following wiring colours:

Wire Colour	Function
Yellow	Permanent 12V
Black	Ground
Red	12V Ignition
Orange	Illumination
Blue	Antenna Remote
Pink	Speed Pulse
Green	Park Brake
Purple/White	Reverse

Wire Colour	Function
Purple	Right Rear Speaker +
Purple/Black	Right Rear Speaker -
Green	Left Rear Speaker +
Green/Black	Left Rear Speaker -
Grey	Right Front Speaker +
Grey/Black	Right Front Speaker -
White	Left Front Speaker +
White/Black	Left Front Speaker -

8. Connect the female vehicle specific connector to the male vehicle connector. Test head unit for correct operation.

STEERING WHEEL CONTROL FUNCTIONS



To Change Time & Date

Single press *Mute* to switch display on. Press & Hold *Mute* for 2 seconds to enable menu mode. Press *Volume +/Volume -* to select 'Clock settings' and press *Mute* to confirm. Use *Volume +/Volume -* to adjust the time and select the next option with *Track +/Track -*. Press *Mute* to confirm. To set the date, repeat as above after selecting 'Set date'. Once time/date have been set, press *Mute* once to confirm settings. NB. The menu option will time out after 15-20 seconds.