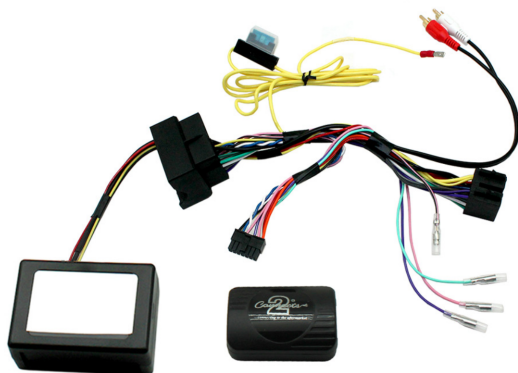


CHBM12C

BMW Steering Wheel Control Interface With MOST Amplifier Retention



Plug and Play



OEM Amplifier Retention



USB Updateable



Works with CAN-Bus



Park Brake



Reverse Gear



Phone Button Support



Speed Pulse

Application:

5-Series 2004 - 2010

1-Series 2004 - 2013

3-Series 2005 - 2012

Designed and Engineered in the UK.



CHBM12C

Can-Bus BMW Steering Wheel Control Interface for BMW Vehicles with OEM MOST Amplifier. NB. Yellow Permanent 12V Wire Must Be Connected Directly to Battery

Product Contents

1. Interface
2. Harness
3. Instruction

Prior to installation

Read the manual prior to installation. Technical knowledge is necessary for installation. The place of installation must be free of moisture and away from heat sources. Please ensure you use the correct tools to avoid damage to the vehicle or product.

Aerpro can not be held responsible for the installation of this product.

Wiring Colour Codes

Wire Colour	Function
Yellow	Permanent 12V
Black	Ground
Red	12V Ignition
Orange	Illumination
Pink	Speed Pulse
Green	Park Brake
Purple/White	Reverse
Pink/Purple	Telephone Mute

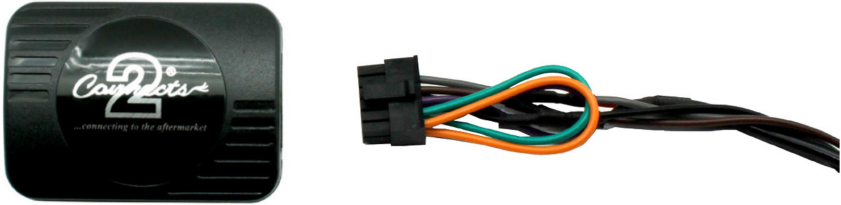
Wire Colour	Function
Purple	Right Rear Speaker +
Purple/Black	Right Rear Speaker -
Green	Left Rear Speaker +
Green/Black	Left Rear Speaker -
Grey	Right Front Speaker +
Grey/Black	Right Front Speaker -
White	Left Front Speaker +
White/Black	Left Front Speaker -

Technical Support

If you need assistance setting up or using your Aerpro product now or in the future, call Aerpro Support Australia
TEL: 03 – 8587 8898 FAX: 03 – 8587 8866 Mon-Fri 9am – 5pm AEST. If you would like to download a digital copy of this manual, or other Aerpro manuals/software, please visit the <http://aerpro.com> website.

FITTING GUIDE

1. Remove and disconnect the original head unit.
2. Connect the 12 way molex connector of the head unit patch lead (supplied separately) to the interface.



3. Connect the opposite end of head unit patch lead to the head unit steering wheel control input on the back of the aftermarket head unit. This may be a 3.5mm jack plug or a wire input depending upon the head unit brand being fitted.

Please see the head unit installation manual for further information on where to connect.

Important Note: This step must be completed before connecting power to the interface. Failure to do so may result in no steering wheel control function.

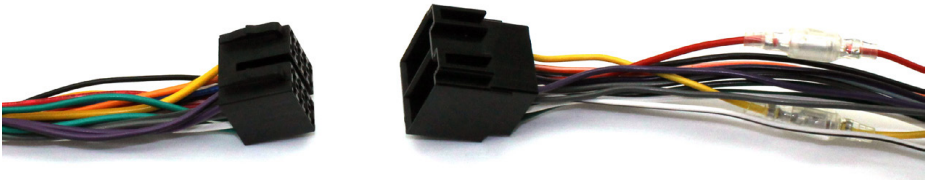


4. Connect the 14 way molex connector to the interface



FITTING GUIDE

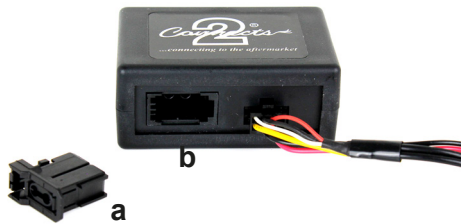
5. Connect the male power/speaker ISO harness to the female power/speaker ISO harness from the aftermarket head unit. For aftermarket head units without an ISO connector, please refer to the wiring colours on Pg. 2.



6. Connect the female vehicle specific connector to the male vehicle connector.

7. Connect the RCA connector to the port on the back of the aftermarket head unit

8. Remove the dust cover (a) from the port on the amp retention interface (b)



9. Remove the fibre amplifier connection from the OEM stereo and plug it into the amp retention interface (b)

10. Connect the yellow permanent 12V wire directly to the battery

11. Test head unit for correct operation and reassemble the dashboard

STEERING WHEEL CONTROL FUNCTIONS

