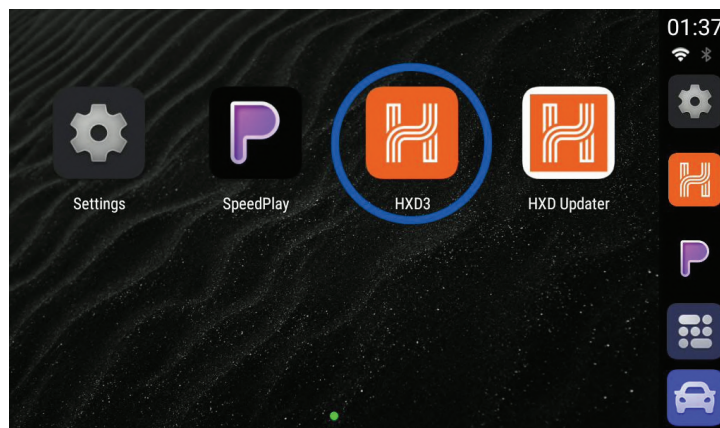


AMHxD3



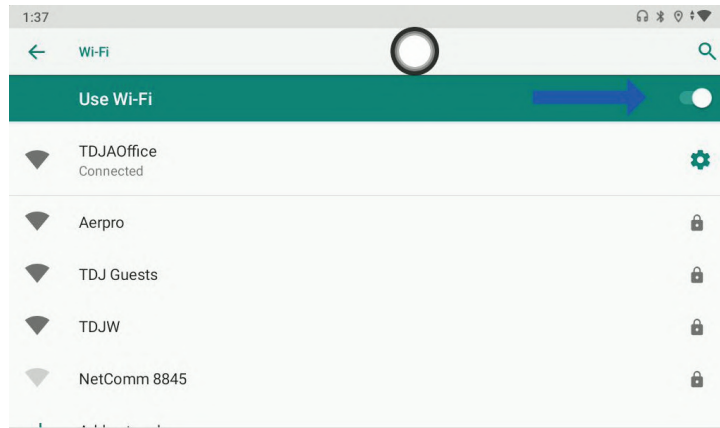
1. Make sure you turn off Bluetooth and Wi-Fi on your phone before inserting your Hema module. This will prevent your phone from automatically connecting to the device during the process.
2. Open up the HxD3 Application.



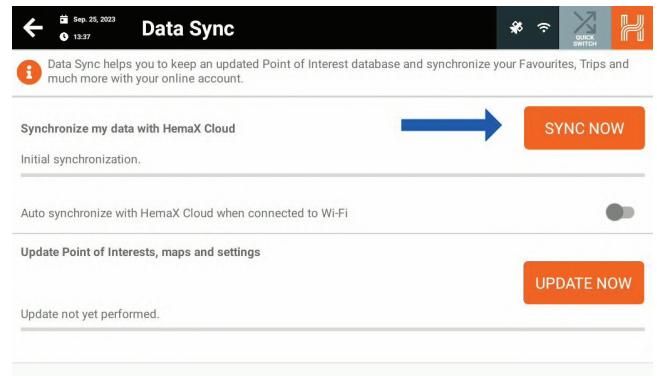
3. Once launched in the top right corner, hold the Wi-Fi icon to bring you to the Wi-Fi Settings



- You may have to turn on Wi-Fi if it is currently turned off, then connect to your home network



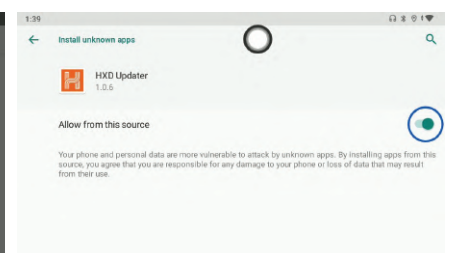
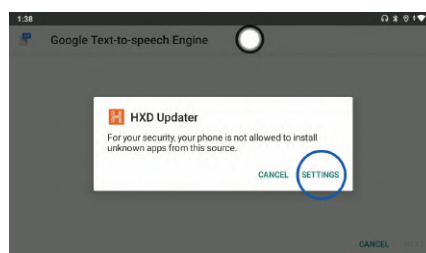
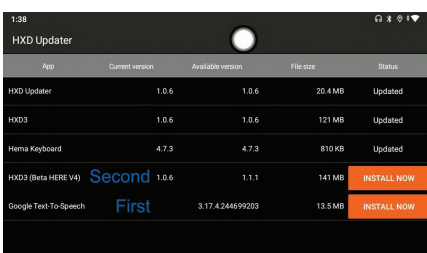
- Once you are connected to the internet, press the back button on the AMHXD3, returning you to the HXD3 application
- Navigate to the Data Sync section, the cloud icon with the arrows, and sync your data with the HemaX cloud if you're logged in.



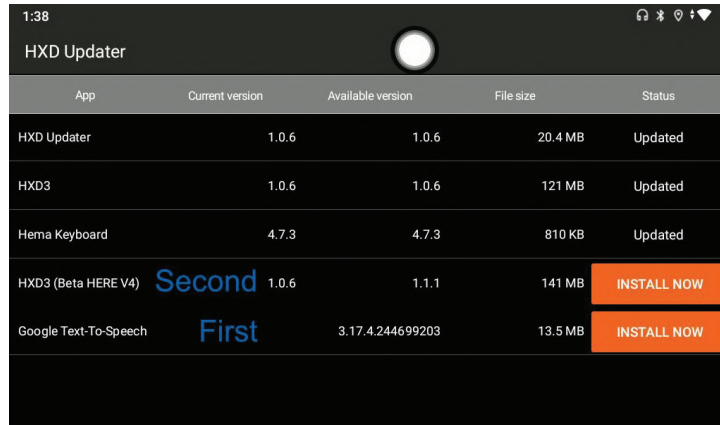
- Press the HXD Updater button in the bottom left corner.



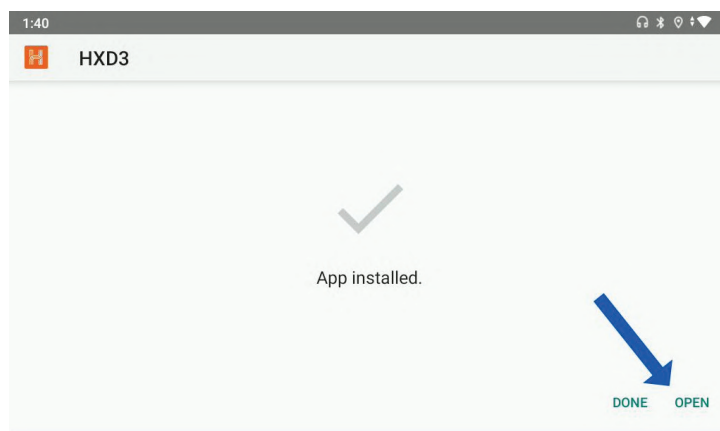
- First install the 'Google Text-To-Speech' application. You may be presented with a pop up message asking to allow unknown apps from being installed. If so, tap Settings and enable 'Allow from source'. Then you can press the back button in the top left and then install the app.



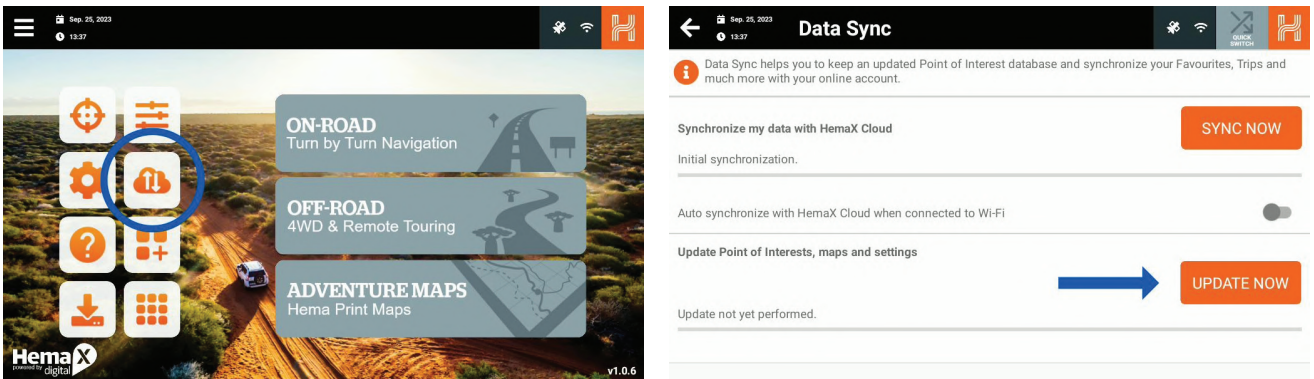
9. Once finished move onto downloading and installing the new Hema application. (Note, the name and position of these apps may be different on your device.)



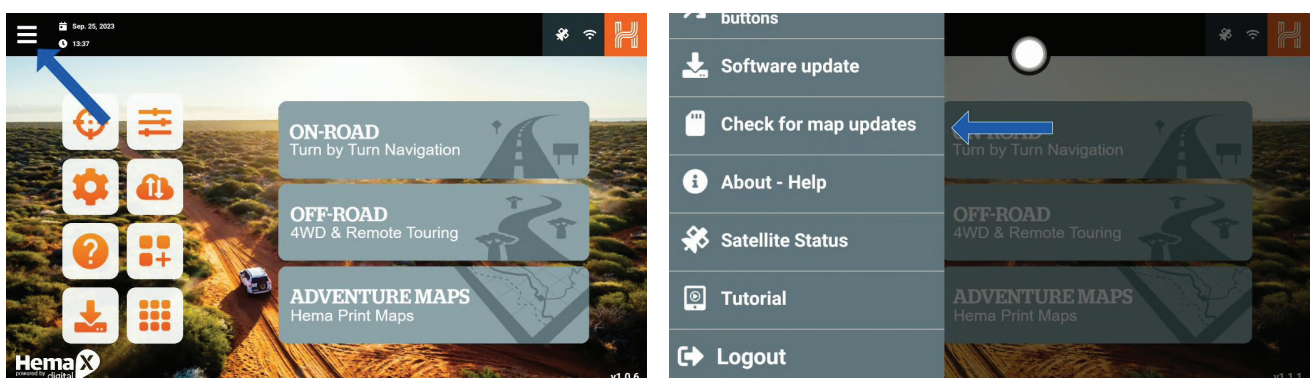
10. Tap install when prompted and tap open when completed.



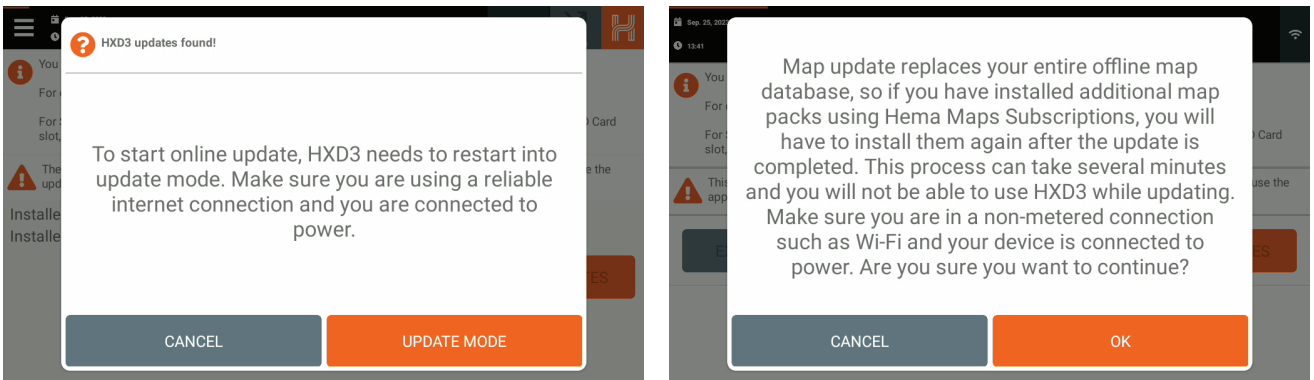
11. Tap the Data sync icon again but this time tap the 'Update Now' button to update the Points of interest.



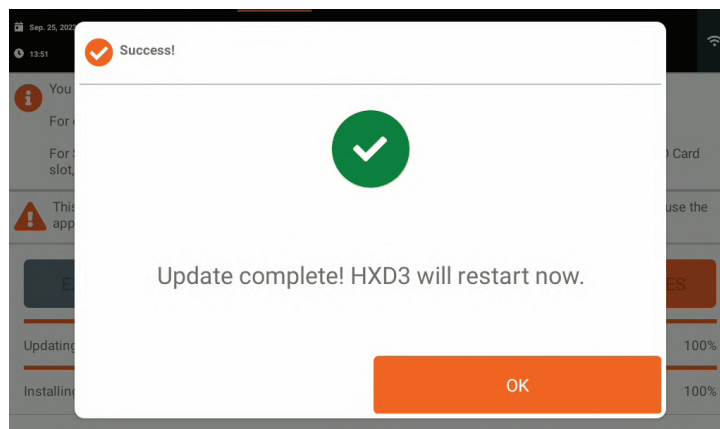
12. Go back to the main menu and navigate to the 'Check for Updates' section in the Hema application by pressing the lines in the top left corner and scrolling all the way down.



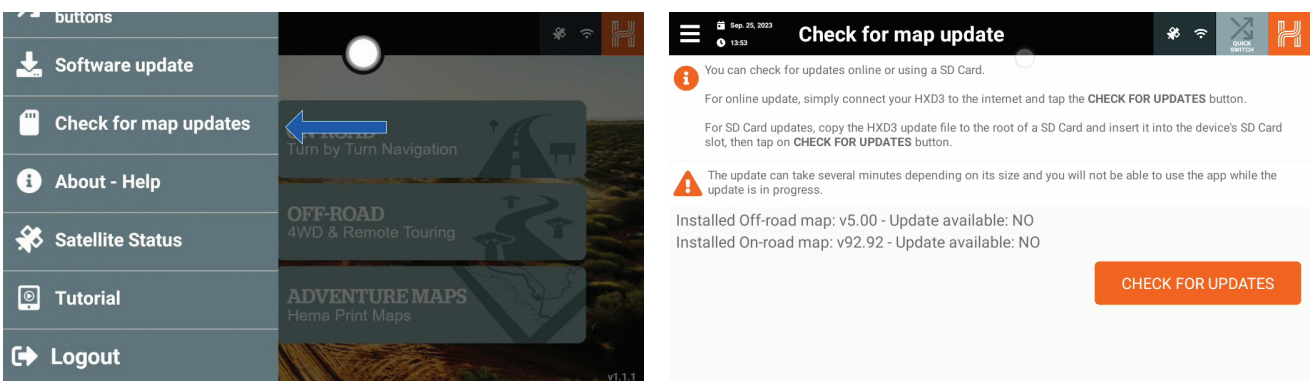
- Tap 'UPDATE MODE' when prompted. The application will restart into boot mode and present another message. Please have a read through it and press OK to continue. This update procedure will approximately take 10-25 mins depending on the internet connection.



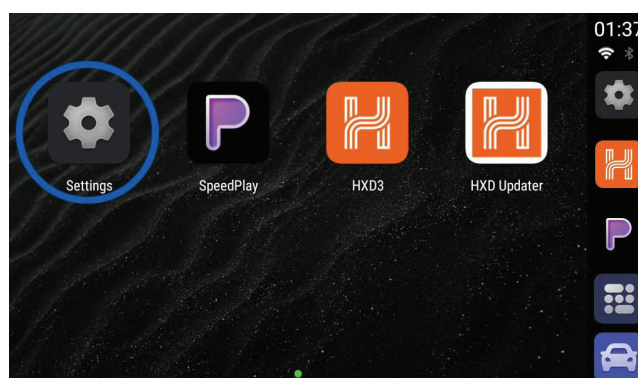
- Once done, press OK and the application will restart.



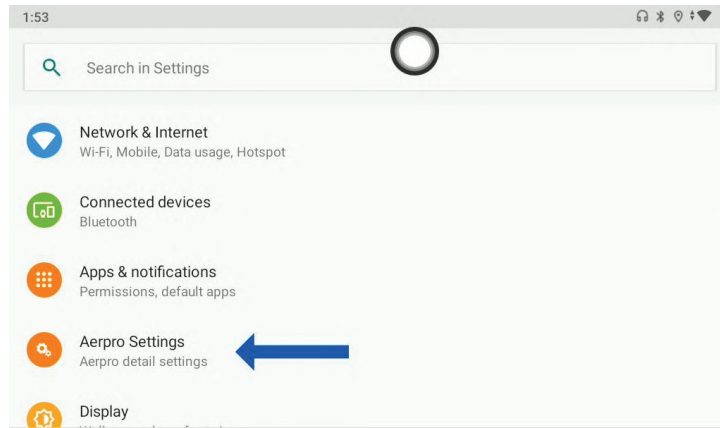
- You can check to make sure the maps have transitioned over to the new version by navigating to the 'Check for Updates' section again.



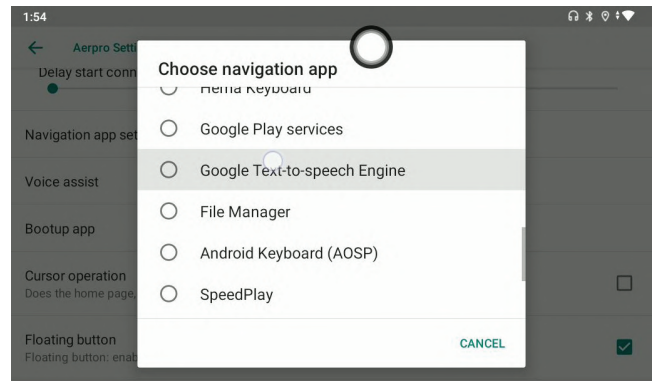
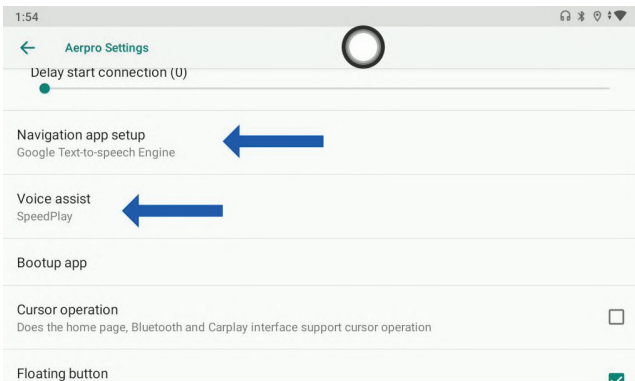
- Lastly, tap the home button the AMHXD3 and navigate to the settings app.



17. Scroll down and then tap 'Aerpro Settings'



18. Tap on 'Navigation app setup' and scroll down until you see 'Google Text-to-Speech Engine' and choose that option. Press OK. This will ensure the audio seamlessly transitions between Hema Navigation and other audio sources.



19. The next option to change is the 'Voice Assist' App. This will ensure your PTT button on your Vehicle's Steering Wheel (if supported) takes you to your CarPlay or Android Auto if connected. Make sure this setting is set to 'Speed Play'

20. You can restart the device and have now completed the update procedure.